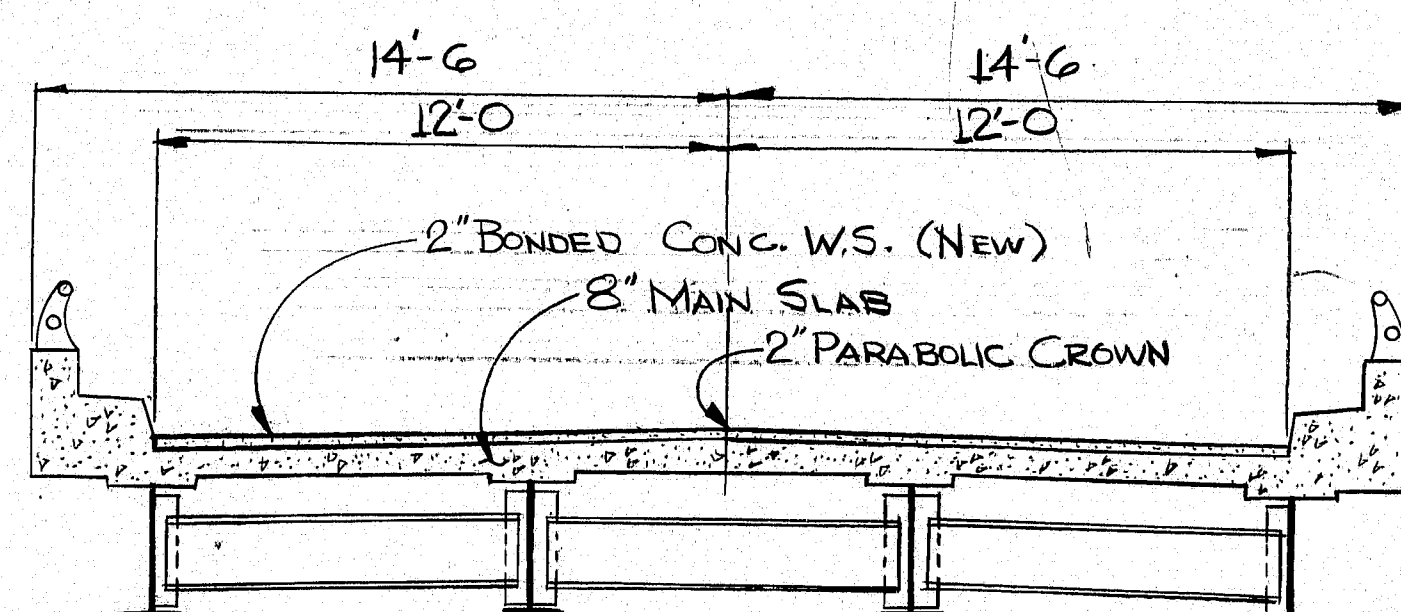


[illegible]

Hand-drawn plan view of a bridge deck with four piers. The deck is 20' wide. Piers are labeled PIER #1 (2' x 2 1/2'), PIER #2 (4 1/2' x 4 1/2'), PIER #3 (3' x 3'), and PIER #4 (2' x 2 1/2'). Pier #1 has J-200 reinforcement, Pier #2 has J-450, Pier #3 has J-300, and Pier #4 has J-200. The deck is divided into spans by the piers, with dimensions: 47'-7 3/16" between Pier #1 and #2, 67'-7 7/8" between Pier #2 and #3, 67'-8 3/8" between Pier #3 and #4, and 47'-7 3/16" from Pier #4 to the right end. The total length is 298'-8 1/4". A north arrow is in the top left corner.

PLAN



NOTE:
REPLACE EXISTING
DRAINS AS NECESSARY

TRANSVERSE SECTION

- ### GENERAL NOTES
1. REMOVE EXISTING WEARING SURFACE.
 2. IF MAIN SLAB STEEL IS EXPOSED, CONCRETE SHOULD BE REMOVED UNDER THE STEEL TO A DEPTH OF 1" MINIMUM.
 3. BLAST CLEAN THE SLAB BEFORE ANY PLACEMENT OF BONDING GROUT OR CONCRETE. NOTE: SLAB IS TO BE SURFACE DRY BEFORE PLACEMENT OF BONDING GROUT.
 4. BROOM-ON A LAYER OF BONDING GROUT JUST PRIOR TO PLACING CONCRETE. SEE ATTACHED SPEC FOR BONDING GROUT SPECIFICATIONS.
 5. CONCRETE TO BE CURED USING BURLAP AND WATER OR OTHER APPROVED METHODS.
 6. CONCRETE TO BE CLASS "M" AND AGGREGATE TO BE CRUSHED LEJDE.

BONDING GROUT

The deck surface must be thoroughly sandblasted and cleaned to remove all dust or loose materials immediately before the bonding grout is placed.

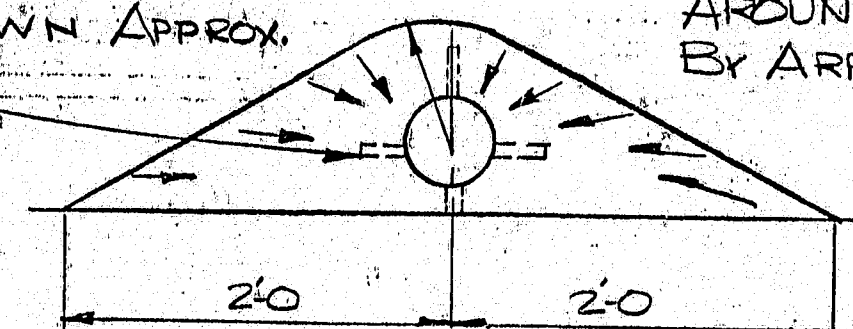
Deck surface to be surface dry with no standing water in pockets or low areas when bonding grout is applied.

The bonding grout shall consist of equal parts by weight of Portland Cement and concrete sand with the plus No. 8 material removed and mixed with enough water to give a thick creamy consistency.

Bonding grout to be evenly broomed onto the concrete surface ensuring that the entire surface is coated and that no excess grout collects in low spots or pockets. Grout shall be thoroughly broomed under and around reinforcing bars.

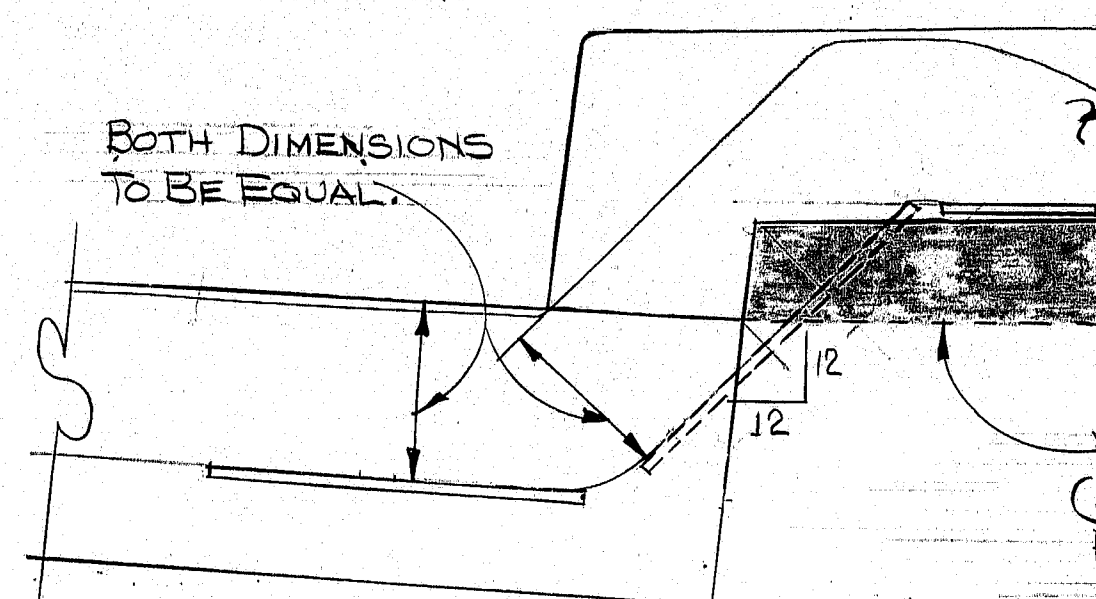
Rate of application must be controlled so that the grout does not dry before the new concrete is placed.

WELD 4-#4 REBARS TO
DRAINS AS SHOWN APPROX.
4'-6" LONG



TYPICAL DRAIN SLOPE DETAIL

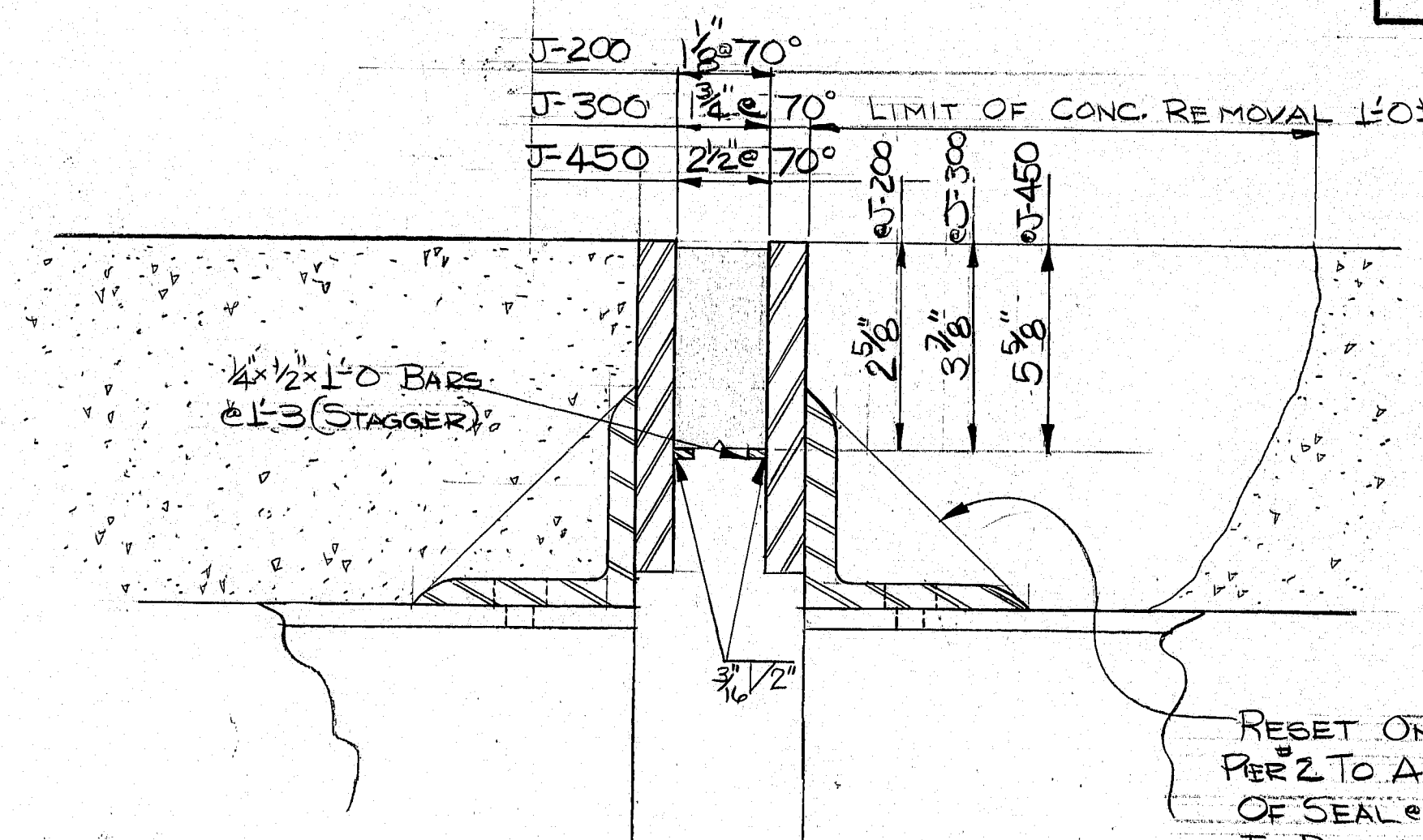
BOTH DIMENSIONS
TO BE EQUAL.



TURN DOWN SEAL
AT END AS SHOWN

WELD AN ADDITIONAL 1" THICK & (SHADED) TO ONE SIDE OF EXISTING EXP. DAM TO ALLOW FOR WELDING KEEPER BAR (DIAGONAL) @ PIER #2 ONLY

CURB DETAIL



SECTION A-A

RESET ONE-HALF OF EXP. DAM @
PREEZ TO ALLOW INSTALLATION
OF SEAL @ 70°. SLOT HOLES
IN BEAM OR ANGLES AS
NECESSARY. ENLARGE
HOLES IN ANGLE ONLY.

STATE OF MAINE
DEPARTMENT OF TRANSPORTATION

**CHASE ROAD
OVER
I-95
IN THE TOWN OF
BANGOR**

PENOBSCOT CO.

CONC. W.S. & SEAL JOINT

SHEET 1 OF 1 CONC. W.S. & SEAL JOINTS
AUGUSTA, MAINE 7/17/81

174-84